



Illinois Department of Public Health Office of Health Protection HIV/AIDS Section

HIV/AIDS Section Overview - AIDS Drug Assistance
Program (ADAP) History and Implications to SFY
2013 HIV/AIDS GRF Lump Sum Budget

AIDS Foundation of Chicago Webinar

March 11, 2013



HIV/AIDS Section Overview

HIV/AIDS Section components:

- Direct Services Unit
 - Care/support services for persons living with HIV/AIDS
 - AIDS Drug Assistance Program (ADAP)/Continuation of Health Insurance Coverage (CHIC)
 - Housing /Housing Opportunities for People with AIDS (HOPWA)
 - HIV & Corrections/Community Re-entry
 - HIV Care Connect website – www.hivcareconnect.com
- Prevention Unit
 - Counseling and Testing (routine opt-out and targeted)
 - Health Education and Risk Reduction/Condom Campaign/Harm Reduction program
 - Partner Services/Linkage to Care
 - Specialized statewide program to prevention mother to child HIV transmission
 - Public Information/Education – State STD/HIV Hotline; Perinatal 24/7 Hotline
- Surveillance Unit
 - Discovery of new cases
 - Determination of disease epidemiology
 - Surveillance-based linkage to care; re-engagement in care
- Training Unit
 - Provides assistance to all units and providers to ensure quality care and best prevention interventions.
 - Evaluation: Provides data analysis and program evaluation across all HIV/AIDS Section units.

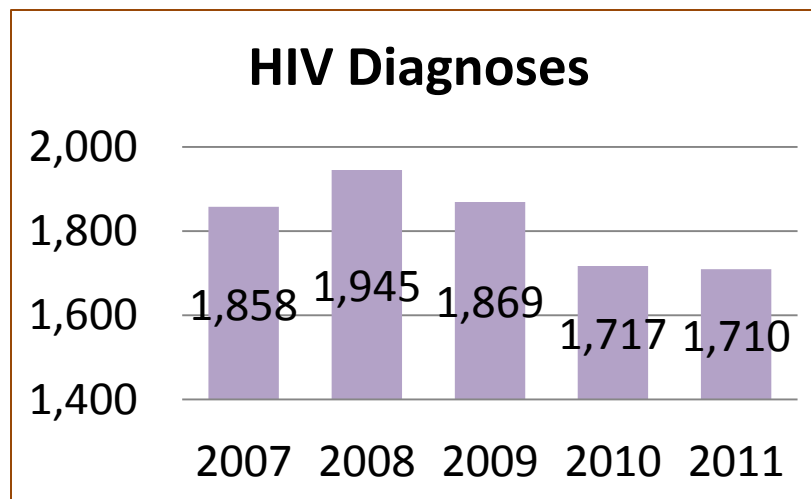
**Administration & Policy – Community Planning; Inter-Agency Task Force;
Grant making/grant monitoring processes; ADAP Medical Advisory Board**

Overview: HIV/AIDS in Illinois

Demographics of HIV/AIDS population in the state:

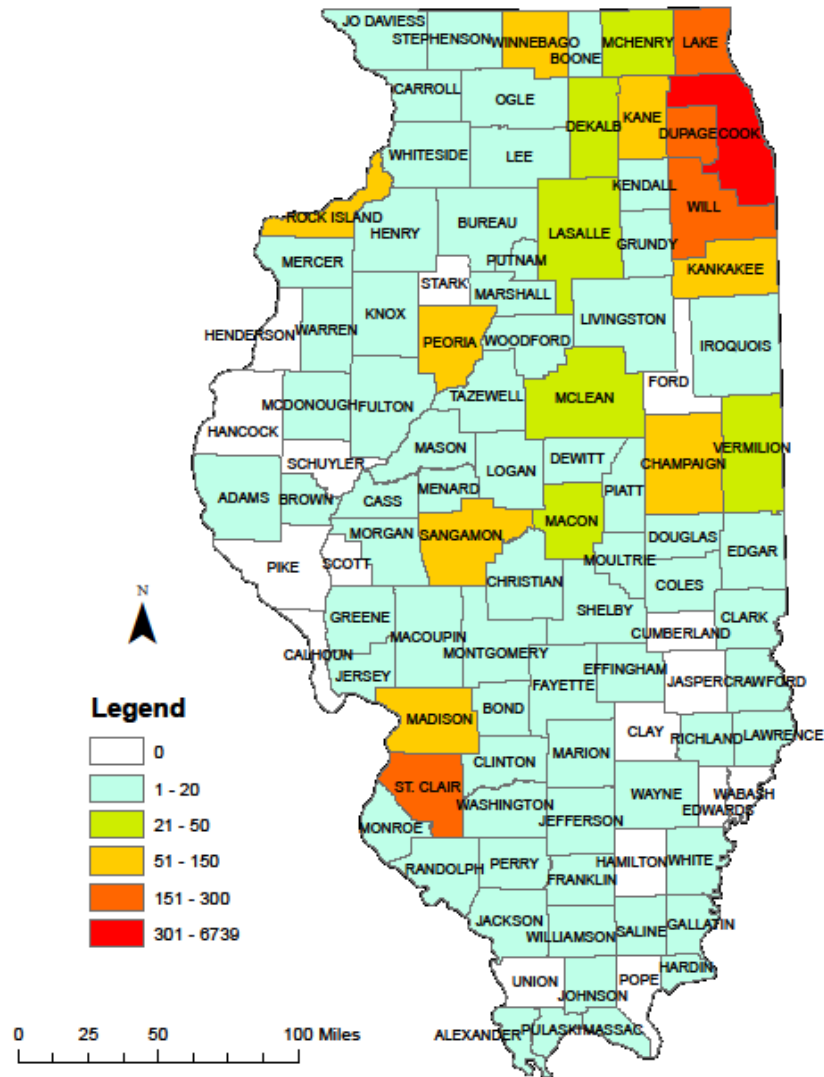
34,170 persons living with HIV/AIDS in Illinois at the close of 2011.

- 12% fewer cases diagnosed in 2011 compared to 2008. Average # of HIV diagnoses each year = 1,820.



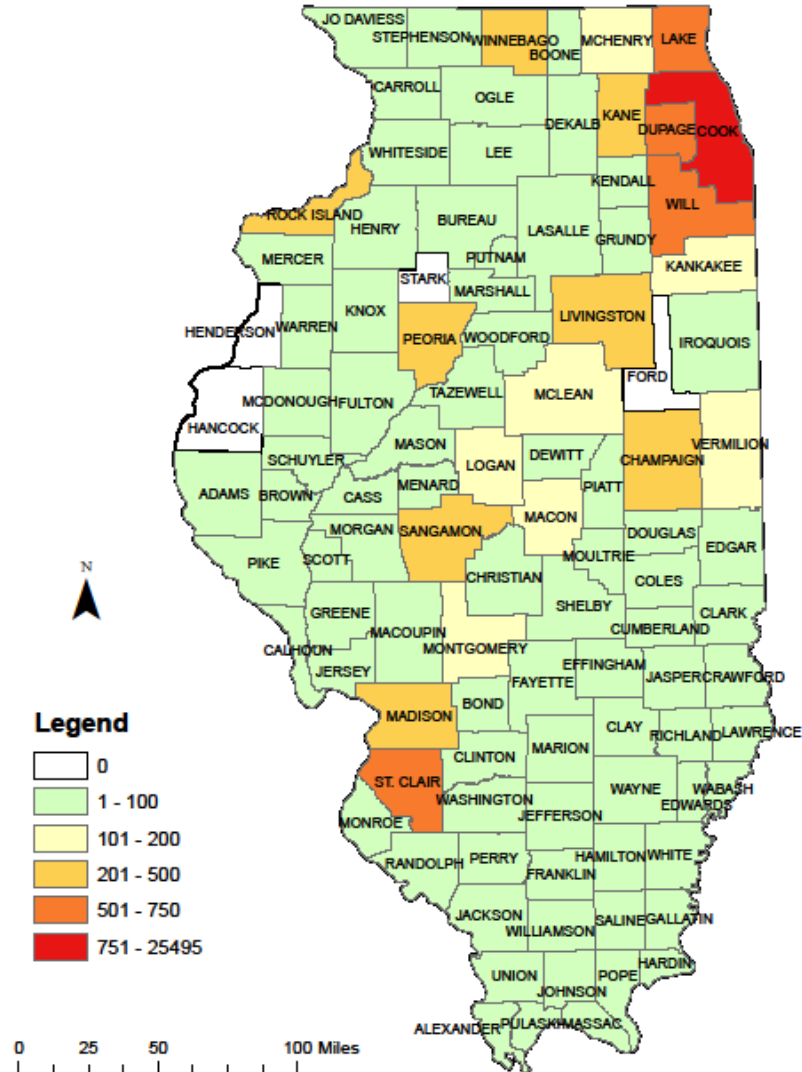
- Men constitute the majority of persons living with HIV/AIDS (78%); females (22%).
- Current trends indicate a shift in the HIV/AIDS epidemic toward young African American MSM, including cases of co-infection with syphilis.
- Overall, HIV incidence has declined sharply among IDUs and much less among high-risk heterosexuals.
- Between 2007-2011, NH-Blacks accounted for 51% of new cases, NH-Whites for 24% of cases and Hispanics 16%.

New HIV Cases Diagnosed in 2007-2011 by County, Illinois



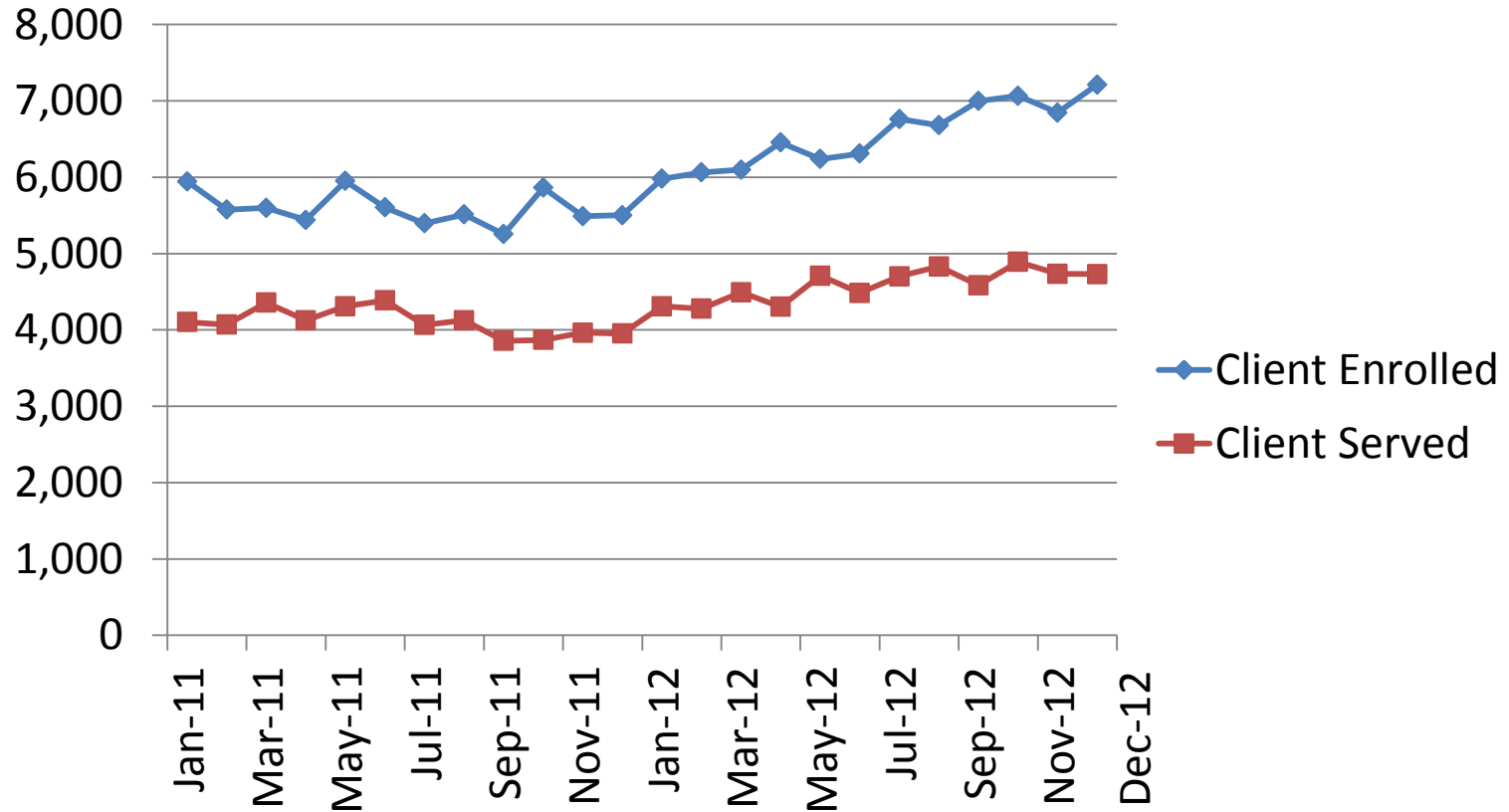
Notes: 1) Data were from Illinois Department of Public Health, HIV/AIDS Surveillance Unit, as of December 28, 2012; 2) All data are provisional and subject to change. Map was created March 5, 2013.

Number of People Living with HIV/AIDS by County, Illinois (As of 12/31/2011)

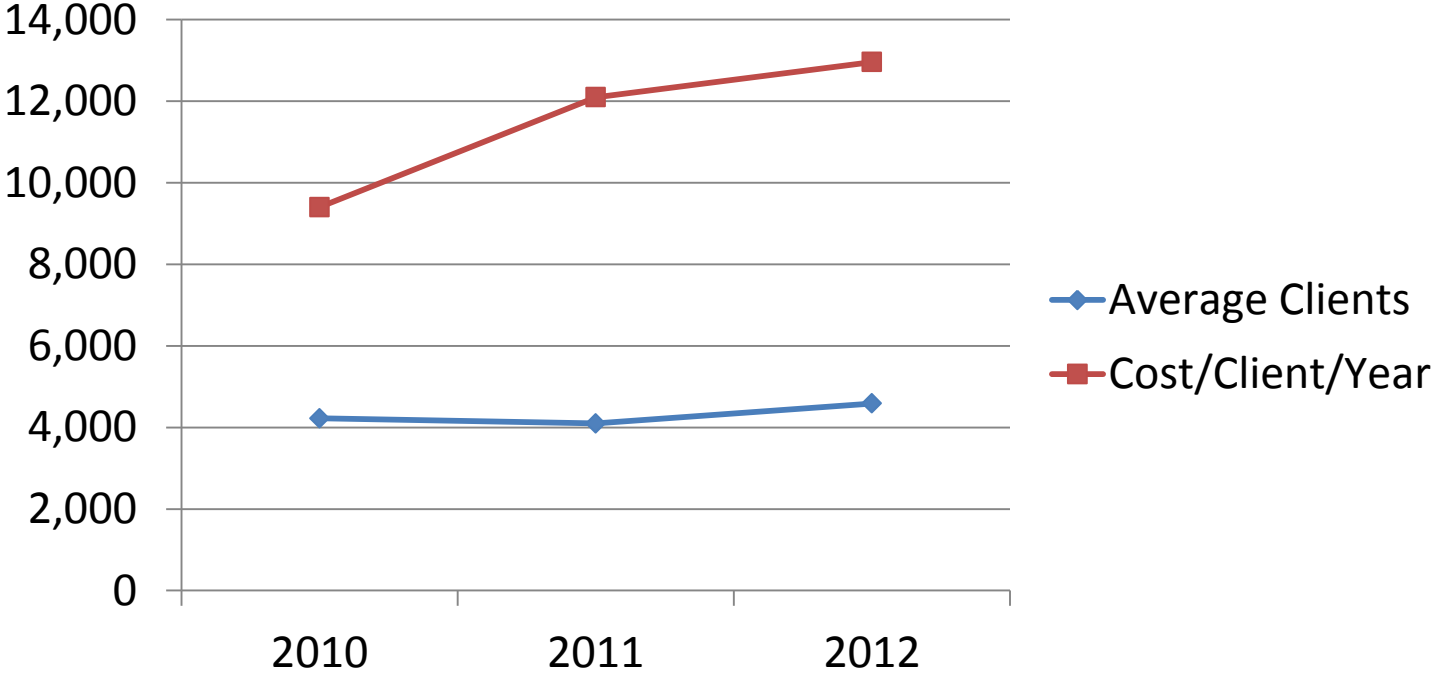


Notes: 1) Data were from Illinois Department of Public Health, HIV/AIDS Surveillance Unit, as of December 28, 2012; 2) All data are provisional and subject to change. Map was created March 5, 2013.

ADAP Utilization 2011-2012



ADAP Enrollment vs. Cost Trends



CY	Average Clients	Cost/Client/Year
2010	4,222	\$9,400.00
2011	4,098	\$12,096.00
2012	4,587	\$12,960.00

ADAP Trends

State/Federal Budget Challenges

- ECONOMY – Unemployment situation somewhat improved, but still very high (IL – 8.7%); Large number of people uninsured or underinsured persists;
- ADAP cost containment (7/1/11): eligibility criteria revised to 300% of FPL; 500% FPL still in place for CHIC
- IL Cares Rx program discontinued 6/30/2012; estimate up to 3000 people living with HIV impacted and returning to ADAP or enrolling new.
- IL General Revenue Fund (GRF) allocation remains combined with HIV & Corrections plus HIV/Minority Health Services budget lines with \$4 million cut from the total (SFY 13).
- Year 2 of CDC HIV Prevention formula change resulting in 25% cut for core IL HIV prevention program and a 56% cut from the routine opt-out HIV testing programs outside of the City of Chicago.
- CDC PS12-1201 HIV prevention award for CY 2013 in at 45%; waiting for sequester/continuing resolution results.
- Ryan White Part B award for 2013 expected to be 36% of FY 2012 amount; waiting for sequester/continuing resolution results.

ADAP Trends - Reasons for cost increases

- Clients living longer;
- Increased co-morbidities;
- More HIV testing/more positives identified; improved patient adherence to prescribed medical regimen
- Resistance issues related to long term combination therapy
- Regimen consists of multiple medications

There is Some Good News for 2013

- CDC Prevention – core prevention funds cut, however IL obtained two new competitive awards:
 1. Category C – PS12-1201, \$845,000 (per year/2 years)
 2. CAPUS – PS12-1210, \$2.5 million (per year/3 years)

HRSA/HAB ADAP Supplemental/Emergency Relief grants obtained totaling \$7,877,968, based upon discontinuation of IL Cares Rx and subsequent impact on ADAP;
\$1.9 million also obtained from manufacturer rebates

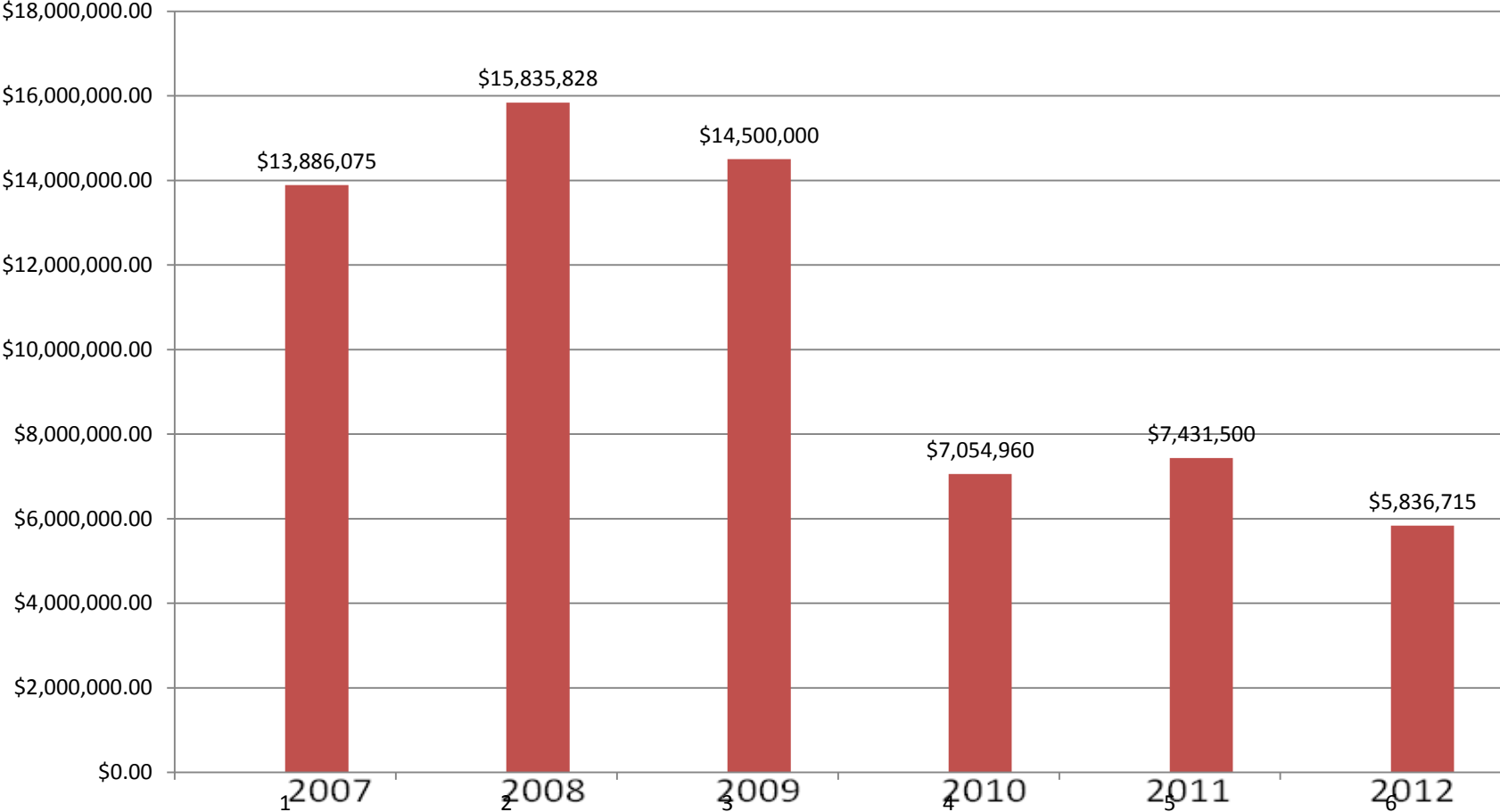
IL Quality of Life Fund - \$2.4 million appropriated (SFY 13)

IL African American AIDS Response Act - \$1.4 million
(SFY 13)

Comparison of ADAP expenditures and Grant Making ability by SFY

State Fiscal Year	Federal Award	State GRF ADAP Contribution	Total ADAP Expenditure	Lump Sum Appropriation	Balance Available for Grant Making
2007	\$27,303,586	\$2,271,025	\$29,574,611	\$17,657,100	\$13,886,075
2008	\$27,296,700	\$165,372	\$27,462,072	\$17,501,200	\$15,835,828
2009	\$27,296,700	\$3,100,000	\$30,396,700	\$19,100,000	\$14,500,000
2010	\$29,009,556	\$ 10,176,240	\$39,185,796	\$18,431,200	\$7,054,960
2011	\$29,557,287	\$18,000,000	\$47,557,287	\$25,431,500	\$7,431,500
2012	\$29,556,713	\$18,571,500	\$48,128,213	\$27,249,500	\$5,836,715
2013	\$37,425,997 (Include ADAP ERF)	\$18,571,500	\$51,129,784	\$25,022,900 (CMHS +\$1 mil)	\$5,004,687

Comparison of GRF Grant Making ability by SFY



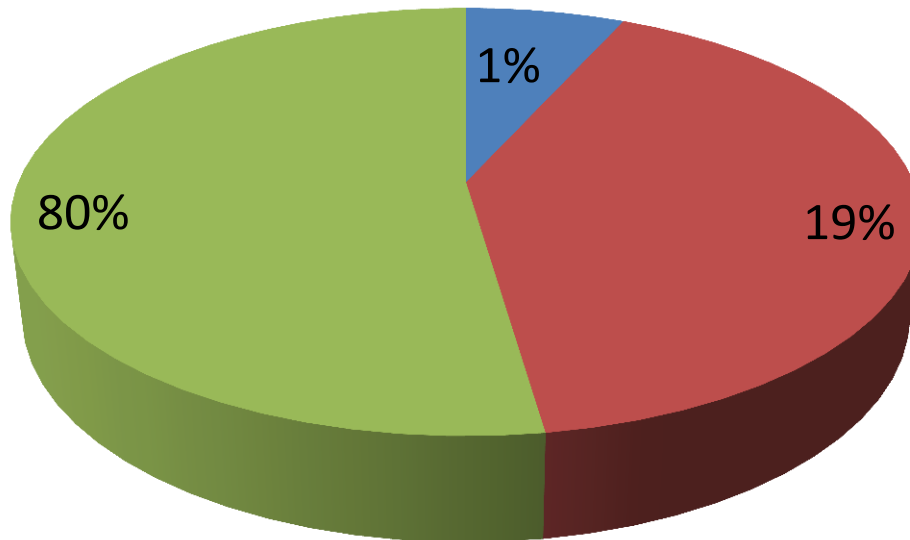
SFY 2013 HIV/AIDS GRF Lump Sum Budget Detail

Administration	GRF Grants	GRF ADAP Support	GRF CHIC and Drug Dispensing Support	Total GRF lump sum
\$2,038,362.00	\$5,004,687.00	\$18,571,500.00	\$1,428,500.00	\$25,022,900.00

■ Administration

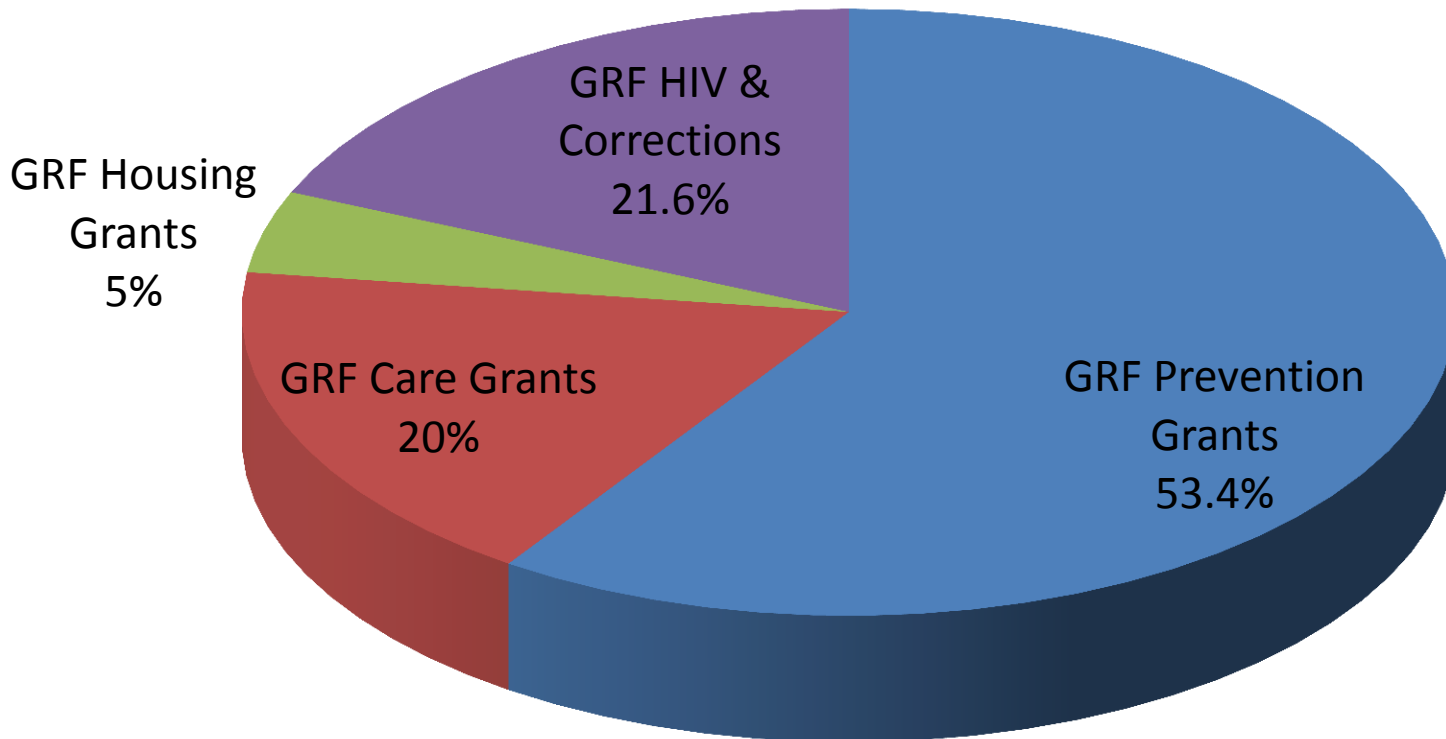
■ Grants

■ ADAP Support



SFY 2013 HIV/AIDS GRF Lump Sum Budget – Grant Category Detail

GRF Prevention Grants	GRF Care Grants	GRF Housing Grants	GRF HIV & Corrections	Total GRF Grants
\$2,673,187.00	\$1,000,000.00	\$250,000.00	\$1,081,500	\$5,004,687.00



Questions?



Contact info:

Mildred Williamson, PhD, MSW

HIV/AIDS Section

Illinois Department of Public Health

122 South Michigan Avenue

Chicago IL 60603

312-814-4846

Mildred.williamson@illinois.gov



www.hivcareconnect.com



Illinois Perinatal HIV Hotline

1-800-439-4079